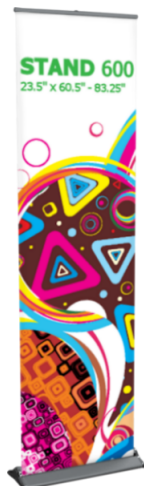


Standard Banner Stands

STAND 600
STAND 800
STAND 850
STAND 920

STAND 1000
STAND 1200
STAND 1500

Relidy STAND mid range banner stand series is an attractive, sleek stand in anodized silver with chrome endcaps and a streamlined base design. With seven base widths to choose from, there is **one** to fit every space.



STAND 600



STAND 800



STAND 850



STAND 920



STAND 1000



STAND 1200



STAND 1500

We are continually improving and modifying our product range and reserve the right to vary the specifications without prior notice. All dimensions and weights quoted are approximate and we accept no responsibility for variance. E&OE. See Graphic Templates for graphic bleed specifications.

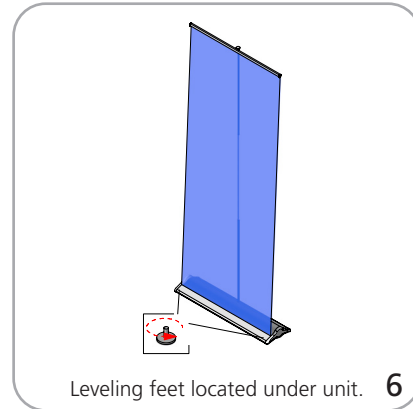
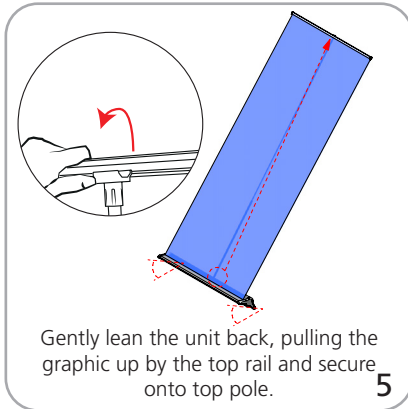
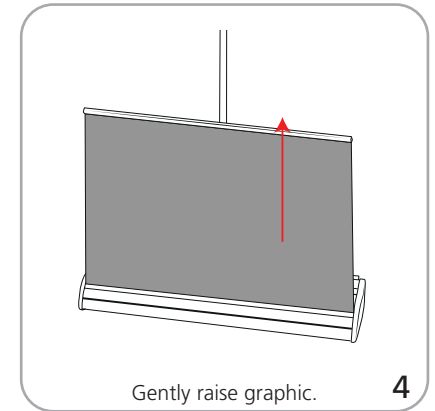
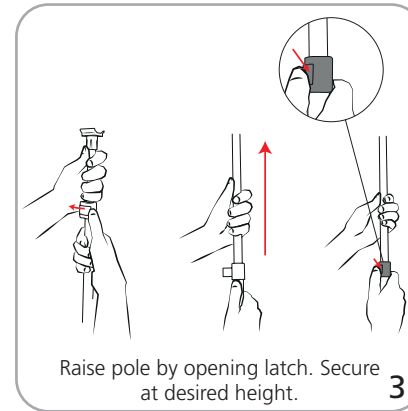
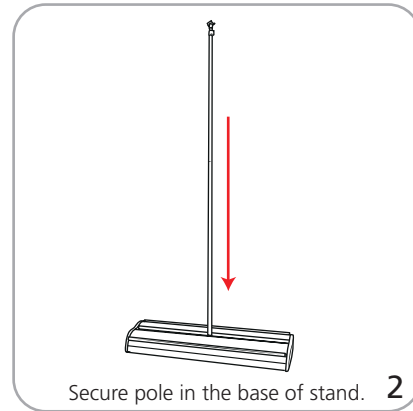
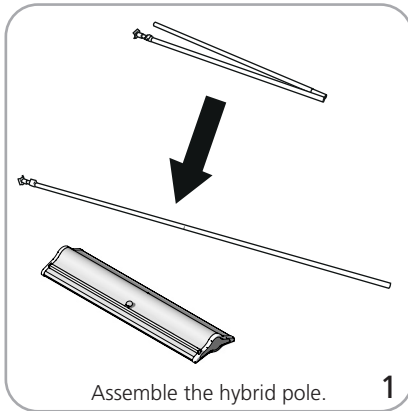
features and benefits:

- Comes complete with base, toolless quick rail, hybrid bungee/ telescoping pole and carry bag
- Variable height: 600mm: 69" - 83.25", all other units: 60" - 83.25"
- Chrome end caps
- Seven widths to choose from: 600, 800, 850, 920, 1000, 1200 and 1500mm
- Weighted base for stability
- Adjustable leveling feet
- Protective foam padding in bag
- Lifetime limited hardware warranty against manufacturer defects

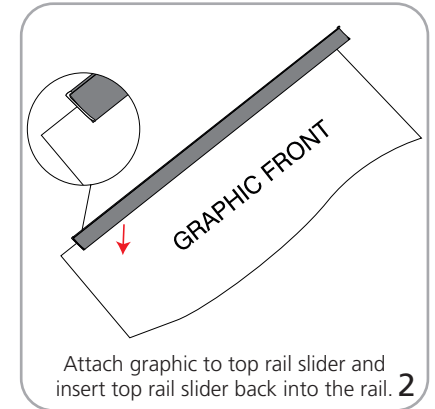
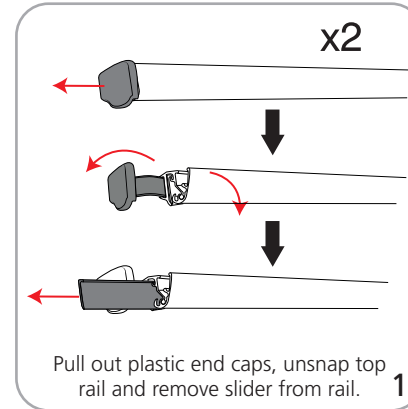
dimensions:

| Hardware | Shipping |
|--------------------------------------------------------------------------------------------------------------------------------------------------------------------------------------------------------------------------------------------------------------------------------------------------------------------------------------------------------------------------------------------------------------------------------------------------------------------------------------------------------------------------------------------------------------------------------------------------------|--------------------------------------------------------------------------------------------------------------------------------------------------------------------------------------------------------------------------------------------------------------------------------------------------------------------------------------------------------------------------------------------------------------------------------------------------------------------------------------------------------------------------------------|
| <p>Assembled unit:</p> <p>600mm: 25.5"w x 86"h x 8.6"d 648mm(w) x 2184mm(h) x 219mm(d)</p> <p>800mm: 33.5"w x 86"h x 8.6"d 850mm(w) x 2184mm(h) x 219mm(d)</p> <p>850mm: 35.4"w x 86"h x 8.6"d 890mm(w) x 2184mm(h) x 219mm(d)</p> <p>920mm: 38"w x 86"h x 8.6"d 965mm(w) x 2184mm(h) x 219mm(d)</p> <p>1000mm: 41.3"w x 86"h x 8.6"d 1050mm(w) x 2184mm(h) x 219mm(d)</p> <p>1200mm: 49"w x 86"h x 8.6"d 1245mm(w) x 2184mm(h) x 219mm(d)</p> <p>1500mm: 61"w x 86"h x 8.6"d 1549mm(w) x 2184mm(h) x 219mm(d)</p> | <p>Shipping dimensions - ships in one box:</p> <p>600mm: 30"l x 10"h x 5"d 800mm: 37"l x 10"h x 5"d 850mm: 39"l x 10"h x 5"d 920mm: 42"l x 10"h x 5"d 1000mm: 45"l x 10"h x 5"d 1200mm: 54"l x 10"h x 5"d 1500mm: 65"l x 10"h x 5"d</p> <p>Approximate shipping weight (w/o graphic):</p> <p>600mm: 7 lbs / 3.2 kgs 800mm: 11 lbs / 5 kgs 850mm: 11 lbs / 5 kgs 920mm: 12 lbs / 5.4 kgs 1000mm: 12 lbs / 5.4 kgs 1200mm: 15 lbs / 6.8 kgs 1500mm: 19 lbs / 8.6 kgs</p> |
| <p>Graphic</p> <p>Refer to related graphic template for more information</p> | <p>additional information:</p> <p>Graphic materials: flatmaxx vinyl or premium opaque fabric</p> <p>STAND 600, 800, 850, 920 and 1000 are supplied with one hybrid pole per unit while 1200 and 1500 come with two hybrid poles per unit</p> |

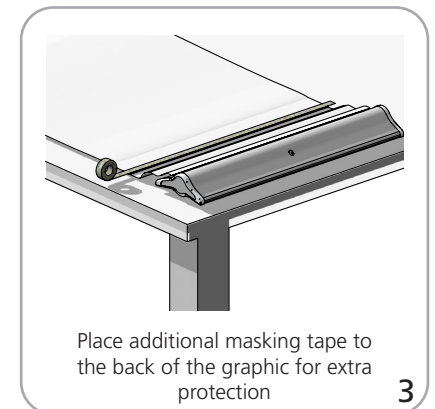
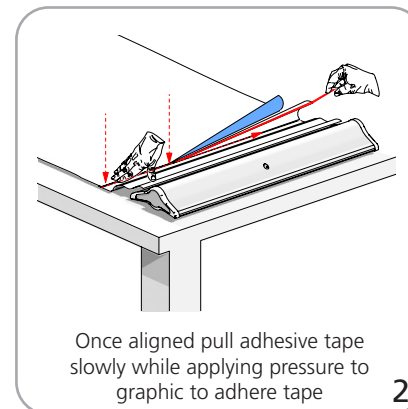
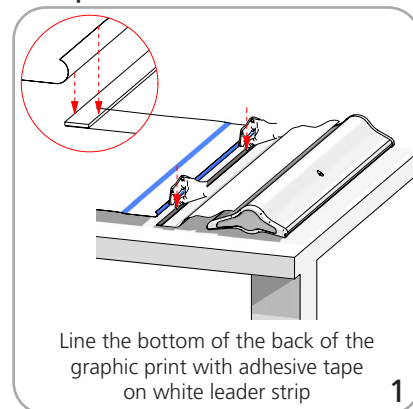
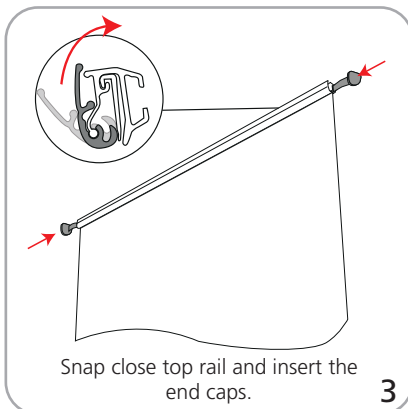
STAND series set-up



Graphic to top rail attachment



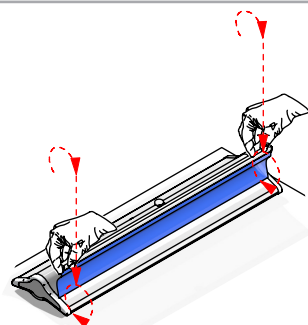
Graphic to base attachment





Remove pin while holding onto the graphic so the graphic does not retract back in quickly

4



Slowly retract the graphic back into the base

5